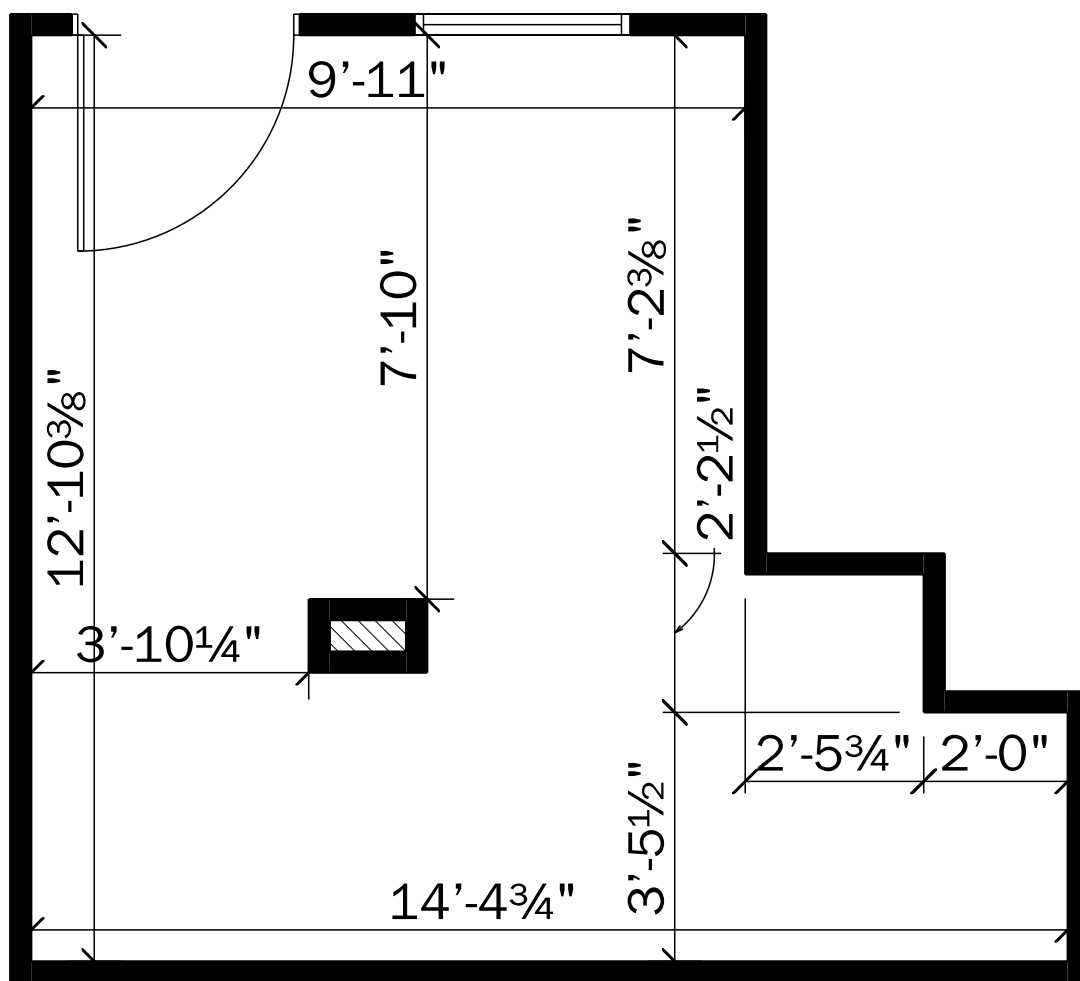


THE HOWARD COURT

302 E. HOWARD ST.
HIBBING, MN 55746



SUITE 319

163 U-sqft
189 M-sqft

These drawings are not produced by an Architect or Engineer.
They are a representation of existing conditions specific to the listed site.
Active Standard Drafting & Design, LLC. assumes no responsibility for claims
or damages arising from errors, omissions, deficiencies or defects of the drawings.

319
LOWER LEVEL

SUITE #319

7/10/2020

SCALE: 3/8" = 1'-0"

NOTES:
ALL WALL DIMENSIONS ARE TO WALL SURFACE,
UNLESS OTHERWISE NOTED.

ALL MEASUREMENTS ARE OF EXISTING WALLS.
NOT FOR CONSTRUCTION.



DRAWINGS PROVIDED BY:

ACTIVE STANDARD
Drafting & Design, LLC.

302 E. HOWARD ST. / SUITE 333
HIBBING, MN. 55746
PHONE (218)232-3883