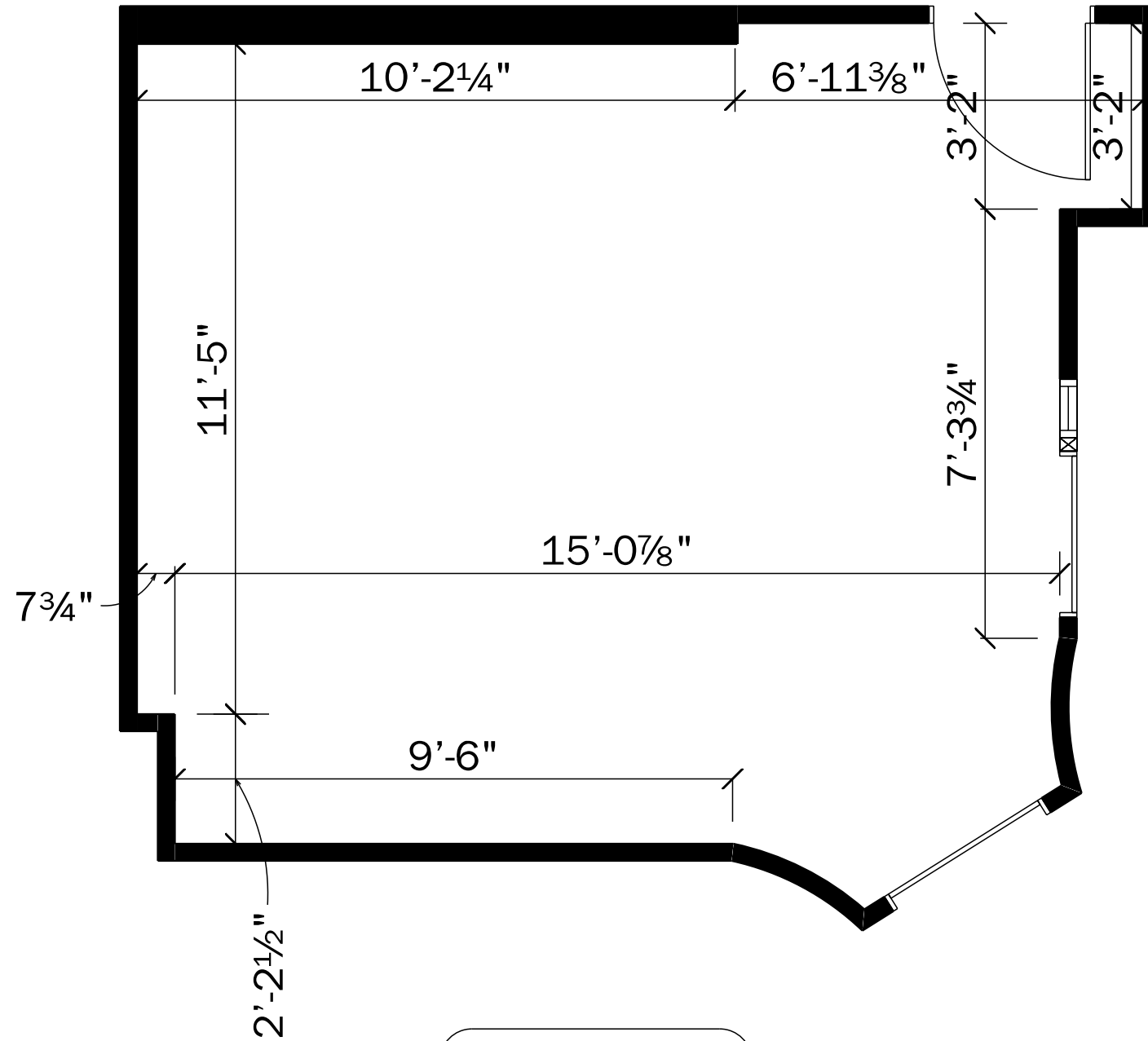


THE HOWARD COURT

302 E. HOWARD ST.
HIBBING, MN 55746



SUITE 309B

243 U-sqft
279 M-sqft

These drawings are not produced by an Architect or Engineer.
They are a representation of existing conditions specific to the listed site.
Active Standard Drafting & Design, LLC. assumes no responsibility for claims
or damages arising from errors, omissions, deficiencies or defects of the drawings.

DRAWINGS PROVIDED BY:
ACTIVE STANDARD
Drafting & Design, LLC.
302 E. HOWARD ST. / SUITE 233
HIBBING, MN 55746
PHONE (763) 232-3883

SCALE: 3/8" = 1'-0"

NOTES:
ALL WALL DIMENSIONS ARE TO WALL SURFACE,
UNLESS OTHERWISE NOTED.
ALL MEASUREMENTS ARE OF EXISTING WALLS.
NOT FOR CONSTRUCTION.

SUITE #309B

7/10/2020

309B

LOWER LEVEL